

SECTION 11110

FLATWORK IRONER 13" DIAMETER HEATED ROLL / 78" FINISHING LENGTH

PART 1 GENERAL

1.01 SECTION INCLUDES:

- A. Flatwork ironer for processing linen items

1.02 SYSTEM DESCRIPTION

A. DESIGN REQUIREMENTS:

1. Construction: Fully Enclosed, Painted Steel Cabinet With Removable Front and Rear Painted Steel Panels. Includes Return Trough and Removable Napkin Tray
2. Input Voltage: 120/60/1
3. Heat Source: Natural Gas, 3/4 inch (19 mm) NPT
4. Roll Diameter: 13 inches (330 mm) minimum
5. Finishing Width: 78 inches (2000 mm) minimum
6. Overall Width: 100 inches (2542 mm) nominal
7. Overall Depth: 26 inches (660 mm) nominal
8. Overall Height: 44 inches (1112 mm) nominal
9. Exhaust Number and Size: 2 Exhausts @ 4 inches (102 mm)
10. Control System: Microprocessor Control
11. Type of Ironer: Heated Roll (Polished Steel Cylinder)
12. Feed Ribbons: NOMEX®. Single Piece, Clipless Construction
13. Return Ribbons: NOMEX® Construction With Covered Staple Seams
14. Safety Features
 - a. Finger guard to prevent injury in case of operator error
 - b. Emergency stop button

B. PERFORMANCE REQUIREMENTS:

1. BTU Input: 102,400 BTU
2. Roll Motor Horsepower: 1/3 hp (.25 kW)
3. Exhaust Motor Horsepower: 1/7 hp (.12 kW)
4. Control System
 - a. Variable speed inverter drive system
 - b. Variable temperature settings from 176 - 356°F (80 - 180°C)
 - c. Safety overheat protection
 - d. Automatic cool down
5. Permanently Lubricated Bearings
6. No Wax Heated Roll
7. Manual Advance for Linen Removal in Event of a Power Failure
8. Roll Scrapers to Prevent Linen From Wrapping Around the Heated Roll

1.03 DELIVERY, STORAGE & HANDLING

A. ACCEPTANCE AT SITE:

1. Inspect machine for damage prior to acceptance. If damage is found, follow freight handler's procedure for claims.

B. STORAGE & PROTECTION

1. Machine should be stored in a site protected from weather, direct sunlight & temperature extremes. Do not remove packaging prior to storage.
2. If machine is to be stored for an extended period of time, consult manufacturer for special requirements.

1.04 WARRANTY

- A. Warranty Period: Limited one year, parts only, commencing on Date of Substantial completion

1.05 SYSTEM STARTUP & COMMISSIONING

- A. Machine installation should be inspected by local manufacturer's representative prior to startup & operation. The party installing the machine is responsible for setting the schedule for this inspection.

PART 2 PRODUCTS

- A. Source quality
- B. Alliance Laundry Systems LLC - UniMac, obtain commercial laundry equipment from a single manufacturer

1.02 QUALIFIED MODELS

- A. UniMac model **UD13F078G** (no substitutions permitted)

PART 3 EXECUTION

1.01 INSTALLATION

- A. Refer to & comply with manufacturer's installation instructions. Do not deviate without permission from site owner, architect, general contractor & manufacturer's local representative.

UD13F078 Specifications

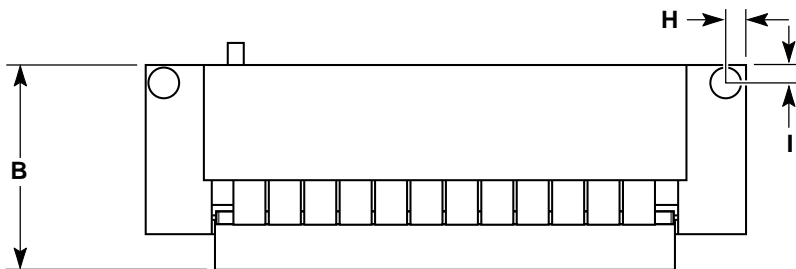
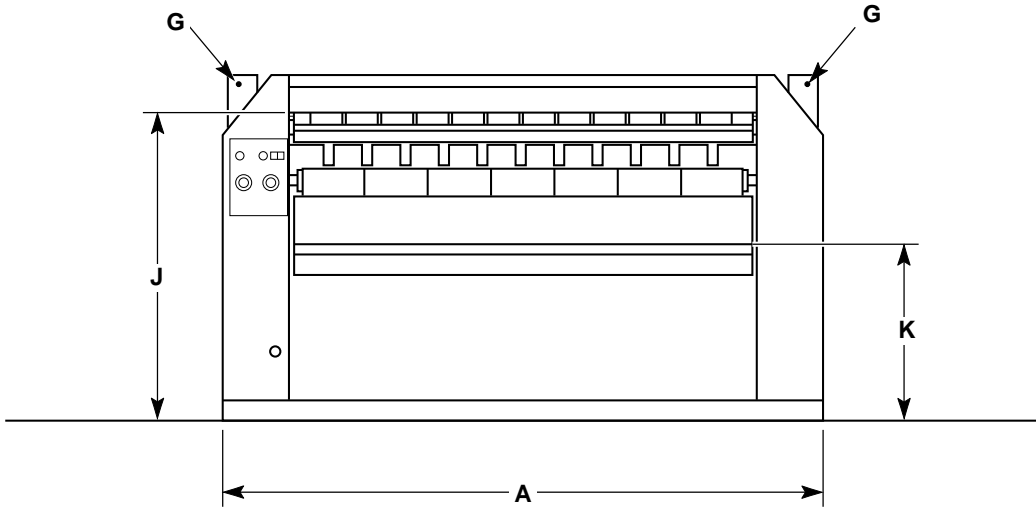
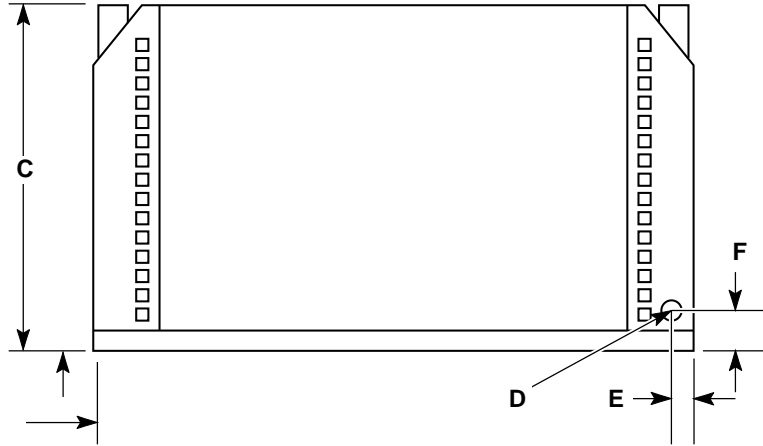
ELECTRICAL REQUIREMENTS

| Heat Source | Serial Plate Voltage | Full Load Amps | Breaker Rating | Recommended Number & Wire Size |
|-------------|----------------------|---|----------------|--------------------------------|
| Gas | 120/60/1 | 4.8 | 15 | 3 x 14 AWG |
| Gas | 208-240/60/1 | 4.8 | 15 | 3 x 14 AWG |
| Gas | 230/50/3 | 4.8 | 10 | 4 x 14 AWG |
| Gas | 400/50/3 | 4.2 | 10 | 5 x 14 AWG |
| Gas | 440-480/60/3 | Install a 208-240/60/1 model and use a remote transformer | | |

DIMENSION TABLE

| A | B | C | D | E | F | G | H |
|----------------------|--------------------|---------------------|--------------------|----------------------|-----------------------|-------------------|----------------------|
| 100 in. (2540 mm) | 26 in. (660 mm) | 44 in. (1117 mm) | 3/4 in. (19 mm) | 2-3/4 in. (70 mm) | 5-1/4 in. (133 mm) | 4 in. (102 mm) | 2-1/4 in. (57 mm) |
| I | J | K | | | | | |
| 2-1/4 in. (57 mm) | 39 in. (991 mm) | 22 in. (559 mm) | | | | | |

MODEL DIMENSIONS



LEPH2058