

---

**SECTION 11110****FLATWORK IRONER 20" DIAMETER HEATED ROLL / 126" FINISHING LENGTH****PART 1 GENERAL**

## 1.01 SECTION INCLUDES:

- A. Flatwork ironer for processing linen items

## 1.02 SYSTEM DESCRIPTION

## A. DESIGN REQUIREMENTS:

1. Construction: Fully Enclosed, Painted Steel Cabinet. Includes Front Return Trough and Linen Feed Tray
2. Input Voltage: 120/60/1
3. Heat Source: Natural Gas, 1 inch (22 mm) NPT
4. Roll Diameter: 20 inches (500 mm) minimum
5. Finishing Width: 126 inches (3200 mm) minimum
6. Overall Width: 168 inches (4274 mm) nominal
7. Overall Depth: 42 inches (1070 mm) nominal
8. Overall Height: 46 inches (1170 mm) nominal
9. Exhaust Number and Size: 2 Exhausts @ 6 inches (153 mm)
10. Control System: Microprocessor Control
11. Type of Ironer: Heated Roll (Polished Steel Cylinder)
12. Feed Ribbons: NOMEX®. Single Piece, Clipless Construction
13. Return Ribbons: NOMEX® Construction With Covered Staple Seams
14. Safety Features
  - a. Finger guard to prevent injury in case of operator error
  - b. Emergency stop button

## B. PERFORMANCE REQUIREMENTS:

1. BTU Input: 236,000 BTU
2. Roll Motor Horsepower: 1/2 hp (.37 kW)
3. Exhaust Motor Horsepower: 1/3 hp (.25 kW)
4. Control System
  - a. Variable speed inverter drive system
  - b. Variable temperature settings from 176 - 356°F (80 - 180°C)
  - c. Safety overheat protection
  - d. Automatic cool down
5. Manual Advance for Linen Removal in Event of a Power Failure
6. Roll Scrapers to Prevent Linen From Wrapping Around the Heated Roll

## 1.03 DELIVERY, STORAGE &amp; HANDLING

## A. ACCEPTANCE AT SITE:

1. Inspect machine for damage prior to acceptance. If damage is found, follow freight handler's procedure for claims.

**B. STORAGE & PROTECTION**

1. Machine should be stored in a site protected from weather, direct sunlight & temperature extremes. Do not remove packaging prior to storage.
2. If machine is to be stored for an extended period of time, consult manufacturer for special requirements.

**1.04 WARRANTY**

- A. Warranty Period: Limited one year, parts only, commencing on Date of Substantial completion

**1.05 SYSTEM STARTUP & COMMISSIONING**

- A. Machine installation should be inspected by local manufacturer's representative prior to startup & operation. The party installing the machine is responsible for setting the schedule for this inspection.

**PART 2 PRODUCTS**

- A. Source quality
- B. Alliance Laundry Systems LLC - UniMac, obtain commercial laundry equipment from a single manufacturer

**1.02 QUALIFIED MODELS**

- A. UniMac model **UD20F126G** (no substitutions permitted)

**PART 3 EXECUTION**

**1.01 INSTALLATION**

- A. Refer to & comply with manufacturer's installation instructions. Do not deviate without permission from site owner, architect, general contractor & manufacturer's local representative.

# UD20F126 Specifications

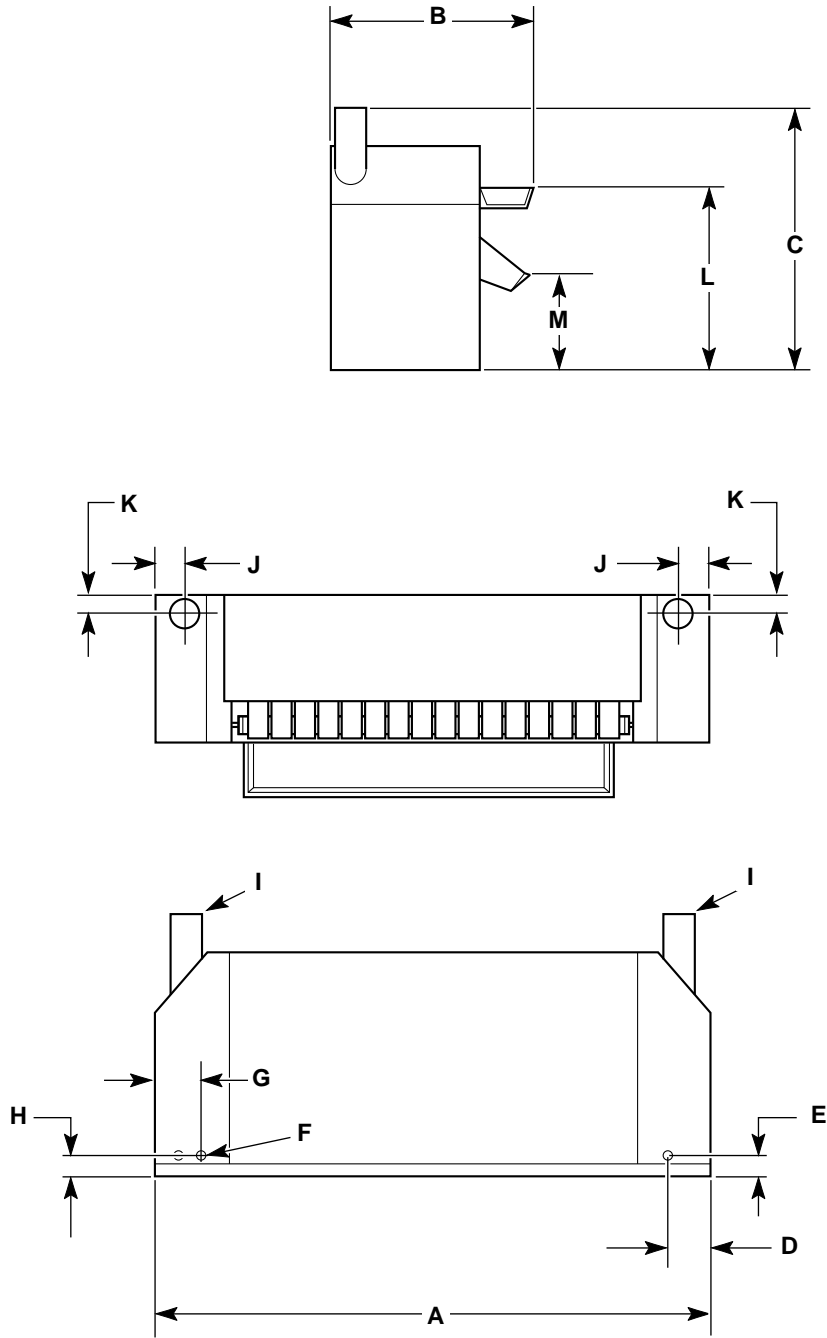
## ELECTRICAL REQUIREMENTS

Heat Source	Serial Plate Voltage	Full Load Amps	Breaker Rating	Recommended Number & Wire Size
Gas	120/60/1	5.1	15	3 x 14 AWG
Gas	208-240/60/1	5.1	15	3 x 14 AWG
Gas	230/50/3	5.1	10	4 x 14 AWG
Gas	400/50/3	4.3	10	5 x 14 AWG
Gas	440-480/60/3	Install a 208-240/60/1 model and use a remote transformer		

## DIMENSION TABLE

A	B	C	D	E	F	G	H	I	J
168 in. (4274 mm)	42 in. (1070 mm)	46 in. (1170 mm)	9-1/4 in. (235 mm)	5 in. (127 mm)	1 in. (22 mm)	9-3/4 in. (248 mm)	5 in. (127 mm)	6 in. (152 mm)	6-1/2 in. (165 mm)
K	L	M							
5-1/2 in. (140 mm)	37 in. (940 mm)	20 in. (508 mm)							

MODEL DIMENSIONS



LEPH2050