

## SECTION 11110

### LAUNDRY WASHER-EXTRACTOR, 100 LB. (45.4 KG) CAPACITY

#### PART 1 GENERAL

##### 1.01 SECTION INCLUDES:

- A. Automatic laundry washer-extractor for processing water-washed linen items

##### 1.02 SYSTEM DESCRIPTION

###### A. DESIGN REQUIREMENTS:

1. Construction: 304 or equal stainless steel cylinder, tub & cover panels
2. Input voltage: 208-240/60/3, 3 wire plus ground
3. Dry weight capacity: 100 lb. (45.4 kg)
4. Wash cylinder volume: 15.9 cu ft (450 L) minimum
5. Overall width: 41.5 inches (1054 mm) nominal
6. Overall height: 68.5 inches (1816 mm) nominal
7. Overall depth: 54.5 inches (1384 mm) nominal
8. Number & size of water supply inlet valves: 2 at 3/4 inch (19 mm), with 3/4 inch (19 mm) NH male connections
9. Number & size of drain outlets: 1 at 3 inch (76 mm)
10. Overflow: Internally plumbed
11. Control system: Programmable microprocessor
12. Cylinder drive: Single motor, 7.5 hp, capable of 594 RPM maximum

###### B. PERFORMANCE REQUIREMENTS:

1. Number of programmable cylinder speeds: 5
2. G-force at highest extract speed: 180 G's
3. Chemical supply system
  - a. manually filled 5 compartment dry chemical dispensing system
  - b. automatic flushing & connections for 5 external supply lines & control signals for 5 external supplies
4. Control system
  - a. Programmable microprocessor: machine keypad, Windows PDA/laptop
  - b. 30 cycle capacity
  - c. 30 programmable water levels
  - d. Real-time clock to record events by date and time
  - e. Cycle counter
  - f. Temperature controlled fill and thermal cool-down capability
  - g. Water monitoring: slow drain and automatic leak detection system
  - h. Diagnostic capabilities

5. Drain valve automatically opens in event of power failure

1.03 DELIVERY, STORAGE & HANDLING

A. ACCEPTANCE AT SITE:

1. Inspect machine for damage prior to acceptance. If damage is found, follow freight handler's procedure for claims.

B. STORAGE & PROTECTION

1. Machine should be stored in a site protected from weather, direct sunlight & temperature extremes. Do not remove packaging prior to storage.
2. If machine is to be stored for an extended period of time, consult manufacturer for special requirements.

1.04 SYSTEM STARTUP & COMMISSIONING

- A. Machine installation should be inspected by local manufacturer's representative prior to startup & operation. The party installing the machine is responsible for setting the schedule for this inspection.

**PART 2 PRODUCTS**

- A. Source quality
- B. Alliance Laundry Systems LLC - UniMac, obtain commercial laundry equipment from a single manufacturer

1.02 QUALIFIED MODELS

- A. UniMac model **UWN100K1M** (no substitutions)

**PART 3 EXECUTION**

1.01 INSTALLATION

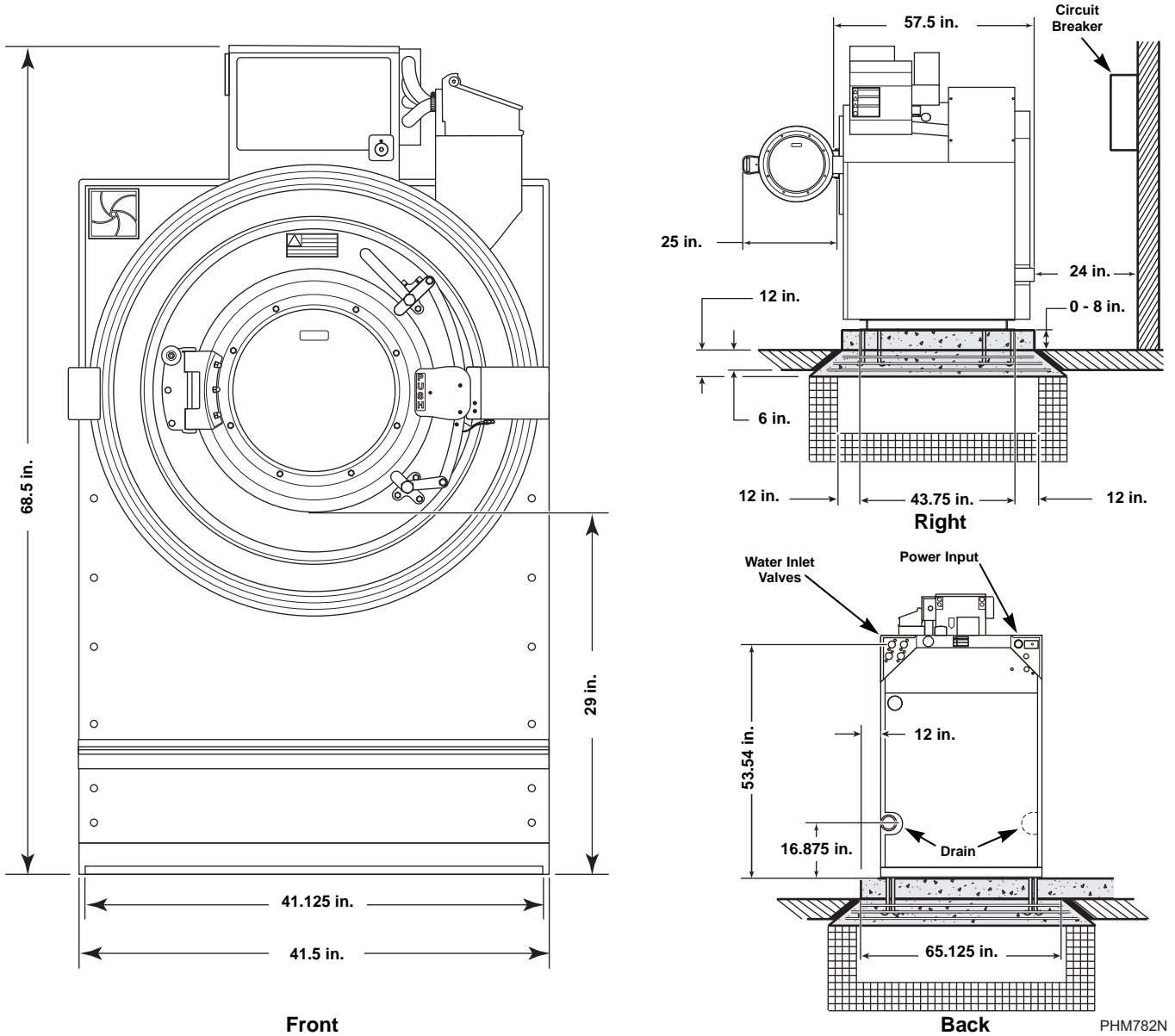
- A. Refer to & comply with manufacturer's installation instructions. Do not deviate without permission from site owner, architect, general contractor & manufacturer's local representative.

# Machine Dimensions and Specifications

## Models UWN100K1MQ and UWN100K1MR



### Dimensions and Foundation Requirements



### Electrical Specifications

Voltage Designation					Non-Electric Heat Machines (Standard)			
Code	Voltage	Cycle	Phase	Wire	Full Load Amps	Breaker (Non Fused)	AWG	mm <sup>2</sup>
Q	200-240	50/60	3	3	10	15	14	2.5
R	308-480	50/60	3	3	9	15	14	2.5

### Water, Drain and Weight Specifications

Drain: Number (Size)	2 (3 in.)
Fill Water Inlets: Number (Size)	2 (0.75 in.)
Weight: Machine (With Shipping Packaging)	1770 lbs. (1835 lbs.)
Side Clearance:	6 in. (minimum) 18 in. (recommended)